



Πανεπιστήμιο Κύπρου
University of Cyprus



Event endorsed by



EACVI
European Association of
Cardiovascular Imaging

SCIENTIFIC PROGRAM

7th

STRESS ECHO COURSE

19-21 Nov. 2026
| Athens, Greece



**ATHENS
MEDICAL
GROUP**

Echocardiology
Dpt of Athens
Medical Center



Echo Lab of the General
Hospital of Athens
Korgialenio Benakio
Hellenic Red Cross

*The theoretical part of the course will be held at
Athens Medical Center 5-7 Distomou str Amarousion*





STRESS ECHO COURSE

Thursday | 19.11.2026

SCIENTIFIC PROGRAM

13.00-14.15

Stress echo procedure

13.00-13.15

Indications and contra-indications for stress echo

K. Papadopoulos

13.15-13.30

Before stress echo

N. Kadoglou

- Lab set-up and medication used
- Informed consent
- Patient's preparation
- Safety measures

13.30-13.45

During stress echo

K. Papadopoulos

- Protocols of stress echo:
 - A. Pharmaceutical stress echo
 - B. Exercise stress echo
- Image acquisition and analysis

13.45-14.15

After stress echo

S. Karagiannis

- Criteria for protocol completion
- Potential complications and their management
- Patient's care and information
- Report

14.15-14.30

Coffee break

14.30-15.15

Application of novel imaging techniques in stress echo

14.30-14.45

Contrast agents

N. Kadoglou

14.45-15.00

Speckle Tracking & 3D

K. Papadopoulos

15.00-15.15

ABCDE Stress Echo Protocol

S. Karagiannis

19-21 Nov. 2026

| Athens, Greece

*The theoretical part of the course will be held at
Athens Medical Center 5-7 Distomou str Amarousion*



15.15-16.15

Stress echo and coronary artery disease

15.15-15.35

Chronic Coronary artery disease -Diagnosis **K. Papadopoulos**

15.35-15.55

Viability study and pitfalls in special conditions
(LBBB, microvascular disease etc) **S. Karagiannis**

15.55-16.15

Stress echo for risk stratification,
patient's prognosis and pre-operative evaluation **N. Kadoglou**

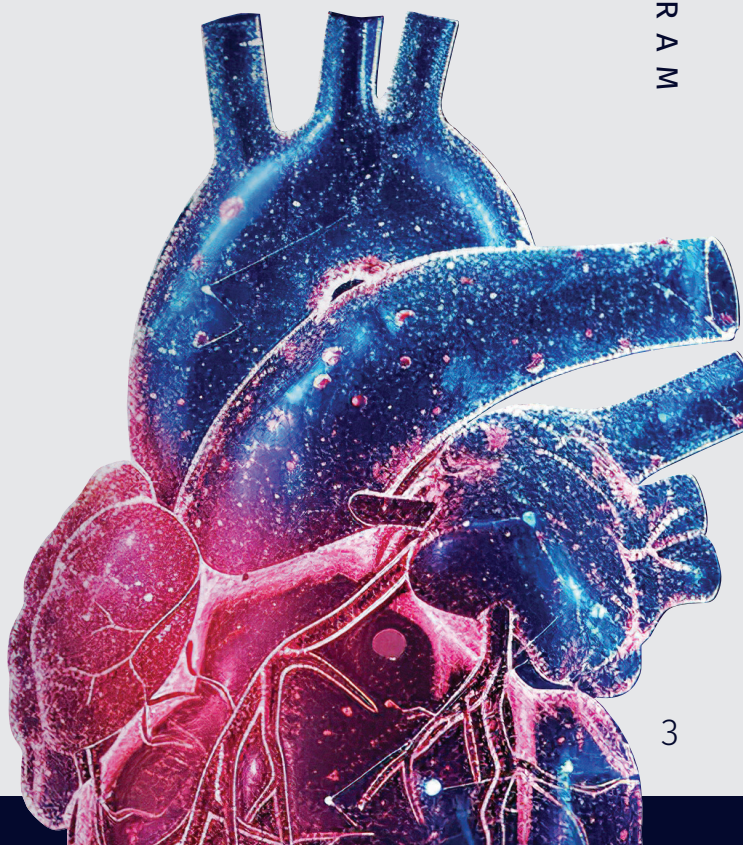
16.15-16.30

Coffee break

16.30-19.00

Computer hands-on

SCIENTIFIC PROGRAM





STRESS ECHO COURSE

Friday | 20.11.2026

09.00-14.00 Echo lab hands-on

14.00-15.00 Light Lunch

15.00-16.05 Stress Echo in valvular diseases

15.00-15.10 Mitral Stenosis N. Kadoglou

15.10-15.30 Mitral regurgitation N. Kadoglou

15.30-15.50 Aortic stenosis S. Karagiannis

15.50-16.05 Mixed valvulopathies D. Ikonomidis

16.05-16.20 Coffee break

16.20-19.00 Computer hands-on

Saturday | 21.11.2026

09.00-14.00 Echo lab hands-on

14.00-15.00 Light Lunch

15.00-16.00 Stress Echo in heart failure and cardiomyopathies

15.00-15.20 Ischemic heart failure K. Papadopoulos

15.20-15.40 Non-ischemic heart failure-Cardiomyopathies P. Papadimitriou

15.40-16.00 Pulmonary hypertension, unexplained dyspnea N. Kadoglou

16.00-16.15 Coffee break

16.15-18.15 Computer hands-on

18.15-19.15 Exam test and results discussion

(Interactive session with comments, conclusions and summarized take home messages)

SCIENTIFIC PROGRAM